

SPECHT FAMILY SIMMENTALS



ANNUAL FALL SALE
OCTOBER 4-5, 2025
AT THE FARM
INITIAL BIDS DUE BY 3 PM OCT 5

WELCOME!!!

Welcome! We're excited to offer another set of productive Simmental calves. We've decided to make some changes this year to the sale format so please take note of the information to the right. The biggest change is that the Open House will be Saturday and Sunday this year with initial bids due by 3 PM on Sunday afternoon. If you aren't able to make it during the Open House, feel free to call and schedule a time to see the calves. We also have Greg Miller available as a consultant again this year. Feel free to give him a call if you can't make it and want an opinion of what the calves look like in person.

We look forward to visiting with everyone who drops by to walk through the calves. We continue to focus on cattle that are functional and productive, and hope that you will find something that will help you hit your goals.

See you the weekend of October 4-5!



OFFERING 17 HEAD

**6 OPEN HEIFERS
4 BREDS
1 STEER PROSPECT
6 BULL PROSPECTS**



SALE LOCATION

22823 HEIDERSCHEIT RD, GUTTENBERG, IA
North out of Holy Cross, IA on Thunder Rd,
right at 4-way stop onto Heiderscheit Rd.
First place on the left.



SCHEDULE OF EVENTS

Cattle can be viewed at your convenience
from now until sale time - please call
ahead.

October 4

9:00 am til dusk: Cattle available for viewing

October 5 - Sale Day

9:00 am: Cattle available for viewing

3:00 pm: Initial Bids Due

Load and Go on all remaining lots



VOLUME DISCOUNTS

A volume discount will be offered to any
one purchasing multiple head of \$50 per
head.



SALE CONSULTANT

Greg Miller 608-778-8785



SALE CONTACTS

John 563-870-2043

Matt 563-543-1345

Steve 563-542-7132

Nicholas 563-543-1344

REGISTRATION PAPERS

All cattle are registered as stated. Registration
papers will be transferred to the new owner free of
charge upon payment in full.



EPDs

All EPDs are the most current BOLT at the time of
printing conducted by IGS and the American Sim-
mental Association. Please note that EPDs may
change from the time the sale catalog is printed
until registration papers are transferred.



BID OFF PROCESS

In the event that two or more customers
express interest in the same lot prior by 3:00
PM on Oct 5, 2025, there will be a bid off
between those individuals. After 3:00 PM
on Oct 5, 2025, all lots will be priced first
come first served. Initial bid price is listed
with each lot. Bids will be in \$100 incre-
ments until \$7500. Bids will be in \$250 in-
crements for lots going over \$7500.



Visit spechtsimmentals.com or like us on Facebook for updates!

OPENS



SPECHTS GLAMOUR 1N

Black, Homo Polled, PB | ASA 4507565 | 1/3/2025

CE	BW	WW	YW	MCE	MM	MWW	API	TI
12.1	2.7	8.7	129.6	4.9	15.6	59.4	123.7	80.5

LLSF Better Believe It
SIRE: LLSF Draft Pick H383
KENCO Steel Magnolia

WLE Copacetic E02
DAM: SS Josie 8K
SS Stormy



Draft Pick - sire

[CLICK HERE FOR VIDEO](#)

Glam was Emily's project this summer. She won her class at the Iowa Simmental Field Day and stood second in class in the Owned Division at the AJSA National Classic. At this point, she's kid broke and ready to go. As impressive as that is, I think her best days are yet to come. She's sound, correct and easy doing. She also comes from one of our best cow families - tracing back 7 generations on the farm. This is true cow power.

OPENING BID: \$3500



SS LADY CRIMSON 21N

Red, Polled, 5/8 | ASA 4556765 | 3/21/2025

CE	BW	WW	YW	MCE	MM	MWW	API	TI
12.8	-0.4	66.5	94.9	7.4	21.6	54.8	119.7	73.2

HTP/SVF Duracell T52
SIRE: THSF Lover Boy B33
RP/MP Right to Love 015

HRF Hairy
DAM: SS Tori
SS Jazz



Lover Boy - sire

[CLICK HERE FOR VIDEO](#)

Steve's Tori cow is eleven now, but she just continues to click!! There's not enough room here to talk about all ten calves, but last year's steer was successfully shown by JJ Daly and many of you still remember the picture of the big-eared black baldy - Dolly in 2017. Crimson is a solid red 5/8 heifer that has a lot of future ahead of her. You can use her to build a foundation Simmi herd, top-end commercial cattle, or even in the club calf world. She'll work!

OPENING BID: \$3000

OPENS



SS DARLA 24N

Black, Polled, PB | ASA 4556770 | 04/02/2025

CE	BW	WW	YW	MCE	MM	MWW	API	TI
11.1	2.0	75.7	106	3.2	17.6	55	133.4	78.5

EGL Firesteel 103F
SIRE: WHF/JS/CCS Woodford
WHF Summer 365C

HILB Oracle C033R
DAM: SS Phoebe 22K
SS Jessie



Sire - Woodford

[CLICK HERE FOR VIDEO](#)

An early April blaze faced heifer out of Woodford. She's young yet, but there's a lot to like about the potential here. Steve's had her dam's cow family a long time - you can trace her pedigree back to one of the first Simmi we owned - that doesn't happen if these cows don't work. Her maternal sister is also in the sale as a bred.

OPENING BID: \$2700

SS ONYX 25N

Black, Polled, PB | ASA 4556769 | 4/9/2025

CE	BW	WW	YW	MCE	MM	MWW	API	TI
15.8	-2.5	74.4	109.7	8.6	21.6	59.2	158.6	88.8

Hooks Eagle 6E
SIRE: TJ Gold 274G
TJ 12C

THSF Lover Boy B33
DAM: SS Rose Bloom 27L
6/RWBS Special Effect



SS Onyx 25N

[CLICK HERE FOR VIDEO](#)

A TJ Gold heifer out of a first calf Lover Boy daughter. This heifer's future is as a productive moderate framed cow. Gold females are making a name for themselves and productive, sensible cattle.

OPENING BID: \$2300

SS RAVEN 26N

Black, Polled, 3/4 blood | ASA 4556768 | 5/2/2025

CE	BW	WW	YW	MCE	MM	MWW	API	TI
14	-1	76	111.5	8.7	18.6	56	153.3	86.7

Hooks Eagle 6E
SIRE: TJ Gold 274G
TJ 12C

THSF Lover Boy B33
DAM: SS Miss Secret 24L
SS Tori



SS Raven 26N

[CLICK HERE FOR VIDEO](#)

Another Gold heifer out of a first calf Lover Boy daughter. This is the baby in the sale - but don't overlook her because of that! She has all the parts and pieces on paper and in person. Her grandam is the mother of the red, Crimson heifer at the start of the sale!

OPENING BID: \$2500

OPENS

BREDS



SS CAYENNE 14N

HomoBlack, HomoPolled, PB | ASA 4507586 | 3/30/25

CE	BW	WW	YW	MCE	MM	MWW	API	TI
11.2	1.1	78.8	110.7	3.7	27.5	66.8	116.2	76.8

W/C Executive Order
 SIRE: W/C Double Down 5014E
 W/C Miss Werning 5014C

TJSC Boone Pickens 46C
 DAM: SS Cayenne 6F
 SS Pepper



Dam - SS Cayenne 6F

[CLICK HERE FOR VIDEO](#)

A pair of maternal sisters that are grand-daughters of the great Pepper cow. We've held on to most of these over the years and Matt and I were undecided most of the summer if we'd let these two go this year. We feel this heifer will grow out a lot like her mother. She was a click green on picture day because she's been running with an older group of calves since weaning. She's learned to fight her way to the bunk and may be the sleeper of the sale.

OPENING BID: \$2300



SS CAYENNE 15M

HomoBlack, HomoPolled PB | ASA 4356761 | 5/2/2025

CE	BW	WW	YW	MCE	MM	MWW	API	TI
13.0	0.3	83.2	121.1	6.8	28.4	69.9	137.7	84.2

WS All-Around Z35
 SIRE: OMF Epic E27
 OMF Time Less B100

TJSC Boone Pickens 46C
 DAM: SS Cayenne 6F
 SS Pepper



Maternal Brother - Sold in 2023

[CLICK HERE FOR VIDEO](#)

15M is the bred heifer of the pair. She's a moderate framed Epic daughter that reminds me a lot of her grandmother. Epic daughters are making a name for themselves as easy doing, productive cattle that are easy on the eyes. I'm excited to see how this mating turns out. Due Feb 21, 2026 to Schooley Krown. Vet confirmed. No clean-up bull.

OPENING BID: \$4700

BREDS



SS SHE'S ALL THAT 13M

Black, Polled, PB | ASA 4356754 | 3/11/2024

CE	BW	WW	YW	MCE	MM	MWW	API	TI
9.0	1.7	72.3	102.8	3.1	21.4	57.5	112.3	72.7

HTP/SVF Duracell T52
 SIRE: THSF Lover Boy B33
 RP/MP Right to Love 015

SVF Steel Force S701
 DAM: SSS Cox Cow 33E
 JDJ She's All That 005K



Maternal Sister - '24 ISF Champ

[CLICK HERE FOR VIDEO](#)

This is the maternal sister to the 2024 Iowa State Fair Champion Cow/Calf pair exhibited by the Sanny Family. A lot of similarities here. I'm excited to see how this mating to Gold turns out. Expect this calf to hit the ground easy and early, and then grow like a weed. Due Feb 11, 2026 to TJ Gold 274G. Vet confirmed. No clean-up bull.

OPENING BID: \$4700

SS LENNOX 24M

Black, Polled, PB | ASA 4406266 | 3/6/2024

CE	BW	WW	YW	MCE	MM	MWW	API	TI
10.2	1.7	78.4	110	4.3	24	63.1	128.4	82.2

HTP/SVF Duracell T52
 SIRE: THSF Lover Boy B33
 RP/MP Right to Love 015

HILB Oracle C033R
 DAM: SS Phoebe 22K
 SS Jessie

[CLICK HERE FOR VIDEO](#)



SS Lennox 24M

Lennox is a thick made, long bodied Lover Boy heifer with an added click of frame. Cow families are important to us and her cow family has been at Steve's a long time - she's 6th generation. Due Mar 9, 2026 to WHF/JS/CCS Woodford. Vet confirmed. No clean-up bull.

OPENING BID: \$4700

SS PETALS 26M

HeteroBlack, Polled, PB | ASA 4406263 | 4/14/2024

CE	BW	WW	YW	MCE	MM	MWW	API	TI
13.2	-0.2	80	115.6	6.9	26.3	66.2	135.8	86.4

HTP/SVF Duracell T52
 SIRE: THSF Lover Boy B33
 RP/MP Right to Love 015

LLSF Vantage Point F398
 DAM: 6/RWBS Special Effect J135
 6/R/WSB Harmony F136

[CLICK HERE FOR VIDEO](#)

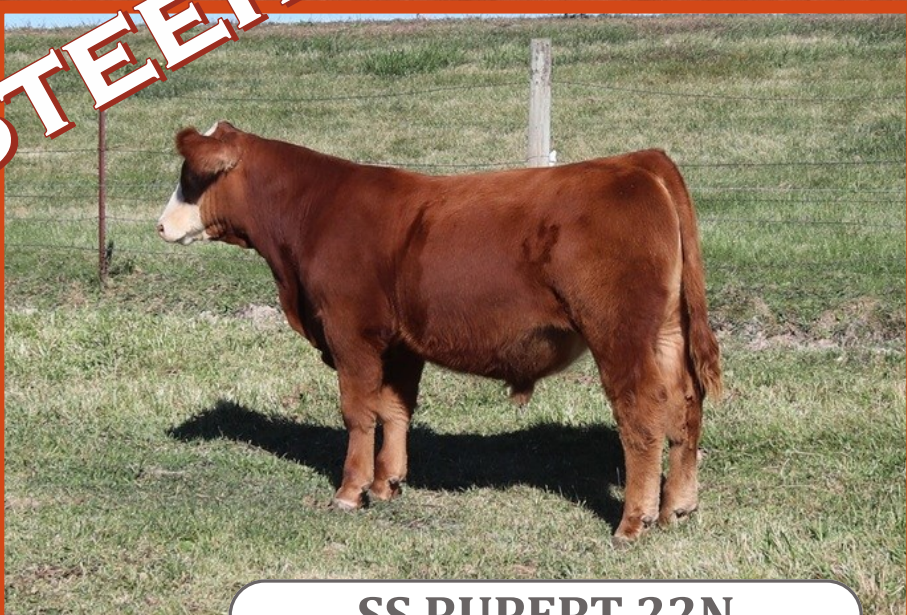


SS Petals 26M

Here is Olivia's show heifer from this summer. She's a direct daughter of the Special Effect heifer Steve purchased from Roger Allen. Due Apr 22, 2026 to TJ Gold. Vet confirmed. No clean-up bull.

OPENING BID: \$4500

STEER



SS RUPERT 22N

Red Baldy, Polled, 5/8 Simm | ASA 4356754 | 3/21/2025

W/C Bankroll 811D
SIRE: W/C Bankroll 4254F
J-LER Dolly's Queen 609

GLS Declaration D611
DAM: SS Stella
SS Tori



Sire - Bankroll 4254F

[CLICK HERE FOR VIDEO](#)

A thick made, neat fronted, calf that should finish out with a ton of red meat. The Stella cow has raised a couple steers Olivia has kept to show. We're offering this one for someone else to have fun with! He is 5/8 Simmental and comes with % Simmi papers. He is currently intact, but will be cut and healed before the new owner takes possession.

OPENING BID: \$2500



Champion Cow/Calf Pair
2025 Iowa Simmental Field Day
Congrats, Lucy and Emily!



BULLS



LLSF Draft Pick



WLE Copacetic



THSF Lover Boy

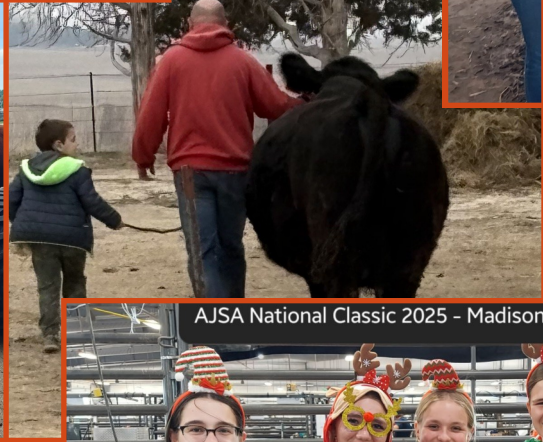
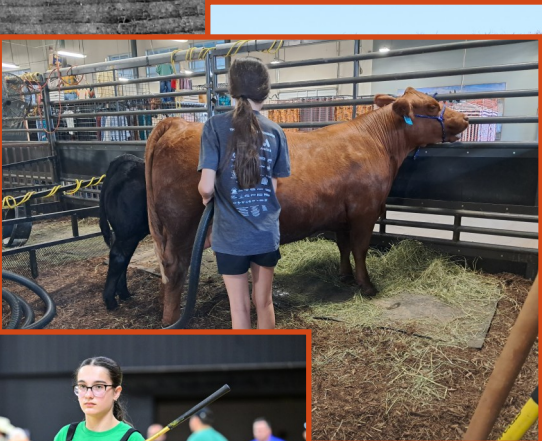


HPF/HILL Uprising "Saban"

ASA#	Name	DOB	CE	BW	WW	YW	MCE	Milk	MW	API	TI	BW	WW	Pedigree
4507566	Spechts Dynamic 2N	1/3/25	10.1	3.4	85.9	126.2	3.7	10.1	53	115	81.3	88	782	WLE Copacetic x Yardley Utah
4507564	Spechts Grandpa Clyde 3N	1/5/25	12.7	0	69.1	87.8	7.1	28.3	62.7	127.8	76.4	74	870	THSF Lover Boy x MFR Dreamboat
4507583	SS Coal 4N	1/9/25	10.3	2.5	77.5	118	5.4	15.4	54.1	113.1	73.8	79	655	Saban x CCR Wide Range
4507584	SS Bishop 5N	1/11/25	7.8	3.8	76.6	107.5	3.5	26.3	64.2	109.4	74.4	89	834	Saban x WLE Uno Mas
4507587	SS Jet 7N	1/13/25	9.7	3.3	82.6	128.3	4.3	12.3	53.5	116.7	76.9	87	842	WLE Copacetic x HPF Optimizer
4507567	Spechts Black Bear 15N	4/7/25	10.8	2.5	82.3	118.7	4	17.9	59	107.3	74.6	88	829	LLSF Draft Pick x WRS Emergent

While it might be early for some of you to be thinking about your next herd bull, we'll have the bulls on display on sale day. These bulls offer some different options. We have always believed that not every bull is "one-size-fits-all" so let us help you match up the right bull for your herd and goals. If we don't have him - we'll tell you so!

Pricing will be available sale day. In the event that two or more customers express interest in the same bull prior by 3:00 PM on Oct 5, 2025, there will be a bid off between those individuals. After 3:00 PM on Oct 5, 2025, all bulls will be priced first come first served. For bulls purchased in October, the buyer has two options: **OPTION #1:** The bulls are priced to be held by us until March 15, 2026 with \$500 down at purchase. We will continue to grow the bulls out, update them on all shots, and have them semen evaluated; or **OPTION #2:** If the buyer prefers to take possession of the bull immediately, we will take \$400 off the price of the bull and the bull needs to be picked up by November 1. Due to the wide variation in bull development programs, we cannot guarantee breeding soundness of the bull with this option.



Specht Family Simmentals
22823 Heiderscheit Rd
Guttenberg, IA 52052

